

KOLKATA CITY



'City of Joy', 'City of Palaces', 'Eternal City'...

Kolkata has many names; all these names capture only one side of this multifaceted city which has enthralled everyone, from a tourist to the resident. It was established in 1690 by Job Charnock, an agent of the British East India Company. He bought three villages, Gobindapur, Sutanati and Kalikata and combined them to build a city what was then known as 'London of the East'. It remained as the capital of British India till the year 1911.

Kolkata, as it is now known, is the capital of West Bengal and one of the largest cities in India. It is where the past meets the future, where the suit meets the dhoti and where tradition meets change!

QUICK FACTS

Area	: 188 sq kms
Altitude	: 5.18 m above sea level
Temperature	: Summer-Max: 41.7°C Min: 38.1°C ; Winter-Max: 36.3°C Min: 9.6°C
Average annual Precipitation	: 158.1 cms
Best Season	: October to March
STD Code	: 033
Language	: Bengali, Hindi, English

GETTING TO KOLKATA

By Air

Netaji Subhash Chandra Bose International Airport at Dum Dum is 17 km northwest of the city centre. The airport houses a domestic and an international terminal. The domestic and international flights arriving and departing from here connect most major cities of India and world. Though easily accessible by metro and bus, passengers can avail prepaid taxi service from the Bengal Taxi Association counter at the exit of the international arrival area.

By Rail

Kolkata has two important railway stations Howrah and Sealdah. Howrah has two terminals serving the Eastern and South Eastern Railways. The direct trains to and from here connect to all parts of India. The Sealdah Railway Station serves suburban as well long distance trains with its Main section and South section. Tickets can be booked either at reservation counters spread all over the city and railway stations or through the Indian Railways website (www.irctc.co.in).

By Road

Kolkata is connected by National Highway 2, 6, 34 and 117 of India's National Highway systems. Calcutta State Transport Corporation (CSTC) plies various types of buses to suburbs and tourist points from major bus depots like Golpark, Esplanade, BBD Bagh, Behala, etc. Private buses in steel body colour with green borders connect the suburbs. The red mini buses with yellow border in between stop at fixed points and have terminals all over the city.

Distances of various cities and villages from Kolkata are as follows:

Balasure 244 kms, Bankura 173 kms, Bansberia 53 kms, Bardhaman 124 kms, Beldanga 181 kms, Bhubaneswar 441 kms, Bishnupur 138 kms, Bodhgaya 536 kms, Bolpur 179 kms, Cooch Behar 804 kms, Cuttack 418 kms, Darjeeling 731 kms, Deoghar 349 kms, Digha 178 kms, Gangtok 786 kms, Gaya 532 kms, Jaleswar 191 kms, Jalpaiguri 706 kms, Jamshepur 296 kms, Kalimpong 737 kms, Kamarpukur 505 kms, Kendu 220 kms, Kharagpur 127 kms, Kishanganj 395 kms, Kolaghat 65 kms, Malda 351 kms, Mayapur 127 kms, Mirik 710 kms, Murshidabad 210 kms, Nabadwip 118 kms, Patna 625 kms, Puri 494 kms, Ranchi 414 kms, Shantiniketan 182 kms, Siliguri 678 kms, Singur 45 kms.

GETTING AROUND

The first underground metro rail service in India - The Kolkata's Metro Rail, serves as the city's lifeline. Extending from Dum Dum to Kavisubhash Panchsayar, it covers more than 24 stations en route. The extensive bus network of WBSTC (West Bengal Surface Transport Corporation) and CSTC, considered the cheapest, though not as comfortable, ply regularly on the city streets. Private deluxe buses are available for sightseeing and intercity transit.

Calcutta Tramways Company (CTC) runs electric trams on street tracks. Though withdrawn in some areas it has, over the years, come to symbolise Kolkata.

The yellow ambassador taxis are easily available, they run on meters and do not charge extra for late night hires. Local trains from Howrah and Sealdah station cater to millions of commuters every day. Ferry services from Howrah to Armenian Ghat, Fairlie Place, Chandpal Ghat and Babu Ghat are used by locals for crossing the river on work.

TOURIST ATTRACTIONS

Acharya Jagadish Chandra Bose Indian Botanic Garden (Map Grid A3) (Howrah; ☉: sunrise to sunset; ☎: +91-33-26680554/ 26689970)

Considered the largest and oldest in South-east Asia, it was previously known as 'Company Bagaan' or Company's Garden. Built in 1787, the garden was a brain child of Lieutenant Colonel Robert Kyd. Sprawling across 273 acres, it is home to over 12,000 trees and shrubs which are of about 1,400 species. The prime attraction of the garden is the 200 year old banyan tree, one of the largest in the world.

Dakshineswar Kali Temple (Map Grid C1) (Dakshineswar; ☉: 5am-10.30am, 4.30pm-7.30pm; ☎: +91-33-25645222/ 25641444)

The Dakshineswar Kali Temple on the eastern riverbank of Hooghly dates back to 1847-1855. The shrine was constructed by Rani Rashmoni, on the site that was once a penance ground for Ramakrishna Paramahansa. Just 3 km from here, one can visit the famous Belur Math, the monastery of Shri Ramakrishna Paramahansa. A boat ride to this temple is not to be missed.



Dakshineswar Kali Temple

Eden Garden (Map Grid B3) (Dr. BC Roy Club House, Behind Akashwani Bhawan; ☉: 9am-8pm)

The beautiful landscaped garden was dedicated and nominated after Mrs. Eden, sister of former Governor General Lord Auckland. Nearby is the Eden Garden Stadium, one of the oldest and biggest cricket stadiums in the world. Famous as Lord's of Asia, the stadium, built in 1864 hosts many national & international matches.

Kolkata Maidan (Map Grid B3) (Chowringhee Road)

A heaven for sport lovers, the picturesque field on west Chowringhee Road serves as a big relief for the busy Kolkataans. Whether a foodie, a football player, a jogger or a cricket fanatic, the 400 hectare green Maidan is every localite's essential destination. From here, one can also get a glimpse of Fort William, Victoria Memorial and the Shaheed Minar.

Howrah Bridge (Map Grid B3) (Shyam Prasad Mukherjee Road; ☉: 5am-2pm, 5pm-10.30pm; Special Pooja on Tuesday and Saturday)

Also known as Rabindra Setu, the Howrah Bridge on Hooghly River serves a regular passage to lakhs of vehicles and pedestrians. The cantilevered eight lane truss bridge was built in 1943 for the purpose to connect Kolkata and Howrah.



Howrah Bridge

Victoria Memorial Hall (Map Grid B3)

One of the eminent and most visited monuments in Kolkata, the Victoria Memorial, dedicated to Queen Victoria, is 184 ft tall and is sprawled over an area of 64 acres. The memorial was later converted to a museum which provides a gallery to British period paintings, sculptures, maps, coins, stamps, textiles etc. The garden outside the building is a perfect place to hang around in the evenings.

Shaheed Minar (Map Grid B3 No.12) (Near Esplanade)

Known as 'Ochterloney Monument', during the British era, the beautiful white pillar was dedicated to Sir David Ochterlony's triumph during the Nepal war in 1814-1816. Later renamed as Shaheed Minar in 1969, it honoured the freedom fighters who sacrificed their lives during the struggle for Independence.

Kalighat Temple (Map Grid B4)

The two century old Kalighat is one of the 51 shaktipeeths of

India. Legend has it that Goddess Sati's right toes fell here during the Mahatandava of Lord Shiva. The temple finds a mention in *Mansar Bhasan* which was composed sometime in the 15th century. Near the temple is Nirmal Hriday - the home for sick, dying and destitute, run by the Missionaries of Charity, once headed by Mother Teresa.



Kalighat Temple

Marble Palace (Map Grid C3) (46, Muktarum Babu Street; ☉: 10am-4pm; Closed on Monday & Thursday; Photography not allowed; Permission from West Bengal Tourist Office, BBD Bagh or Indiatourism; ☎: +91-33-22825813)

The neo classical 19th century marble mansion, takes one back to the traditional Bengali yesteryears. Structured with tall Corinthian columns, balconies and inclined roofs, its pavilions show similarities with Chinese architecture. The 3 storied edifice houses a *thakur dalan* (family temple) near the patio, a restaurant, a rock garden, a lake and a small zoo.

Rabindra Sadan (Map Grid B4) (Junction of AJC Bose Road & Cathedral Road)

Whether dance, drama, art, poetry or literature, everything finds a platform in Rabindra Sadan. Named after the noble laureate Rabindra Nath Tagore, the complex was established in the year 1967. Inside the complex is Rabindra Sadan theatre - Nandan, Bangla Academy and Gaganendra Prodorshonshala. Apart from plays, dramas and stage shows, many popular film festivals are also organised here.

Rabindra Sarovar (Map Grid C4) (Salt Lake City)

Once called as Dhakuria Lake, the Rabindra Sarovar is an artificial water body which serves as a perfect picnic spot. Apart from the migratory birds, one can also visit the Rabindra Sarovar Football Stadium, Mukha Mancha - open air theatre and the Japanese Buddha Temple.

Nakhoda Masjid (Map Grid C3 No.8) (Jacquaria Street; ☉: 6am-8pm)

One of the renowned mosques of Kolkata, Nakhoda Masjid was built in 1926 by Abdar Rahim Osman. Its architecture resembles the monuments of Fatehpur Sikri. The colossal prayer hall can provide room for more than 10,000 *namazis* at one time.



Nakhoda Masjid

St. Paul's Cathedral (Map Grid C3 No.7) (1A, Cathedral Road; ☉Prayer: 7.30am, 8.30am, 10.30am; ☎: +91-33-22230127)

This Episcopal cathedral church was sponsored by Bishop Wilson and built in 1880 by Sir Edward Burne-Jones. Following an Anglican style of worship, the church is well known for its stained glass panels, carved benches and murals on wall. The meditation hall in the churchyard is a gift of peace from the dignitaries of Shantiniketan.



St. Paul's Cathedral

Vidyasagar Setu (Map Grid B3)

Popular as second Hoogly Bridge, the suspension bridge was constructed in 1992. Constructed over 22 years on an estimated cost of 3.88 billion rupees, the bridge provides passage to more than 85,000 vehicles every day.

Jorasanko Thakurbari (Map Grid C3)

The brick-red mansion of Jorasanko 'Thakurbari', was once the residence of Nobel laureate Rabindranath Tagore. It was turned into a museum by Pt. Jawahar Lal Nehru in 1961. Special celebrations take place on the poet's birthday on the 25th day of Bengali month of *Baisakh*.

Writers' Building (Map Grid B3 No.13) (BBD Bagh; ☉: 9am-6pm; Photography not allowed)

The huge red building on BBD Bagh also known as 'Mahakaran' or the Secretariat, houses the office of the Chief Minister and more than 6,000 administrative officers.

Zoological Garden (Map Grid B4) (Alipore; Entry fee: ₹10; Video Domestic/ Commercial: ₹250/ 500; ☉: 9am-5pm; Closed on Thursday & National Holidays; ☎: +91-33-24791150, 24399391)

This zoo was a brainchild of L Schwendler, a member of the Asiatic Society of Bengal. Built in 1875, the zoological garden has been a source of education, amusement and pleasure for the people of Kolkata and tourists who visit from all over the world.

FEW WORDS FROM INDIAN LEXICON

English to Hindi/ Bengali

Address	: Pata/ Thikaana
Answer	: Jawab/ Uttor
Arrival	: Pahunchna / Aagomon
Baggage	: Saaman/ Jeenish Potro
Directions	: Dishayen/ Dik
Festival	: Tyohar / Porbon
Food	: Khana/ Khaabar
Friend	: Dost / Bondhu
Fruit	: Phal/ Phal
Gift	: Uphar/ Uphoahr
Hungry	: Bhukha/ Khudhito
Hurry up	: Jaldi Karo/ Taratari Koro
Water	: Pani/ Jal
Price	: Mulya/ Daam
Purchase	: Kharina/ Kena
Question	: Sawal/ Proshno
Safe	: Surakshit/ Shurokkhito
Shop	: Dukaan/ Dokaan
Thank You	: Dhanyavadi/ Dhonnobaad
Toilet	: Jan Suvhidha/ Sulabh bathroom
Vegetable	: Sabzi/ Torkaar
Your	: Tumhara/ Tomaar

CONVERSATIONAL PHRASES

At the Airport	: Airport Er Kaache
Where is the exit?	: Baahire Jaoaar Raasta Kothaye?
How far is the hotel?	: Hotel Koto Doore?
What is the rent?	: Bhara Koto?
Please call Taxi	: Doya Kore Taxi Deke Din
Please stop here	: Ekthane Thaamun
Place worth visiting	: Dekhaar Moto Jayega
Want city guide map	: Shohorer Maanchitro Chaayi
Show me the way	: Amaake Raasta Dekhaan
Please do booking	: Doya Kore Booking Kore Din
Which is the main shopping centre?	: Prodhan Bajaar Konta
I want to send an e-mail	: Aami Email Pathaate Chaayi
It is hot/ cold today	: Ajke Khoob Gorom / Thaanda

ACCOMMODATION

Wide range of hotels in all categories are available. Contact nearest tourist office or www.incredibleindia.org

FAIRS & FESTIVALS

Saraswati Puja (January-February)

On the holy day of Basant Panchami, Devi Saraswati, the Goddess of knowledge and art is worshipped with bel (Aegle marmelos) leaves, fresh white/ yellow flowers, sandal wood paste, phaag and abhro (herbal colours).

Dol Purnima (March)

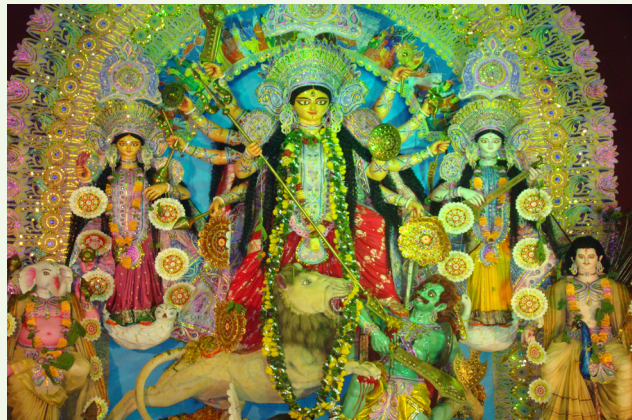
Just like Holi in rest of the country, the spring festival of colours known as Dol Purnima in West Bengal is celebrated with great pomp and show.

Poila Baisakh (April)

Also known as Naba Barsha, Poila Baisakh is the celebration of the Bengali New Year.

Durga Puja (September-October)

The celebration of Goddess Durga's victory on buffalo demon king *Mahisasura*, is one of the biggest festivals in West Bengal. The city of Kolkata lightens up like a diamond during night as people crowd up the roads and gather in pandals.



Durga Puja

Kali Puja (October-November)

The festival of Goddess Kali is celebrated during Diwali. Special puja is held in Kalighat and Dakshineswar Temple where the ritual of animal sacrifice takes place. The occasion is marked with decoration of lamps, candles and a lot of crackers.

Bhai Phota (October - November)

Bhai Phota is an occasion where a sister puts sandal mark or *tika* on her brother's forehead and prays for his long life. The brother in return promises to protect her throughout his life.

Christmas (December)

Christmas is celebrated in Kolkata with the same spirit as other festivals. The day begins with carols and prayers. Park Street,

the main hub of celebrations is lighted with twinkling bulbs and draped with decorative papers.

Muharram

The day of martyrdom of Prophet Mohammed's grandson Imam Hussain is observed all over India with a mournful modality. In Kolkata huge rallies can be seen from Rajabazar, Kidderpore and Sealdah which meet at Belaghata.

SHOPPER'S PARADISE

Park Street (Map Grid C3) (☉:10am-10 pm; Open on all days)

Renamed as Mother Teresa Sarani, Park Street is one of the busiest and popular shopping arcades of Kolkata. One of the posh localities of Kolkata, it boasts of its night life and noted restaurants like Blue Fox, Mocambo, Peter Cat, Tantra, Park Hotel etc. Just in its neighbourhood is Chowringhee, another major shopping centre.



Park Street

Bowbazar (Map Grid C3) (Bipin Behari Ganguly Street; ☉:10am-8.30pm; Closed on Sunday)

One of the oldest markets of Kolkata, Bowbazar is a hub of branded jewellery showrooms. The limitless designs and variety in gold, silver and stones make it a one stop shop for weddings.

Burrabazar Market (Map Grid C3) (☉:11am-8.30pm; Closed on Sunday)

The Marwari dominated market Burrabazar, locally called *Bara Bazar*, graduated from a textile to a wholesale market. Today the 19th century market boasts of its garments, sarees, jewellery, restaurants, florists and grocery shops.

College Street (Map Grid C3)

'Boi Para' or a book lane, as it is known, College Street is the ultimate destination for book lovers, students and those who have a literary bent of mind. The Indian Coffee house in its neighbourhood is a landmark known for 'Adda' or gossip. One can have a cup of coffee or tea in the presence of Kolkata's renowned celebrities, many of whom are regular visitors.

Gariahat Market (Map Grid C4) (Gariahat; ☉:10.30 am-8.30 pm; Closed on Sunday)

The bustling market of Gariahat in South Kolkata is a shopaholic's first choice. It has wide varieties of branded and non-branded sections which include everything from night wear, tees, jeans, dupattas, tops, sarees, shirts, leather and jute bags, clutch purses, wallets, food bags, shoes and many more.

New Market (Map Grid C3) (Lindsay Street, off Chowringhee Road; ☉:10 am-8 pm, till 2.30 pm on Saturday; Closed on Sunday)

The gothic style market was set up for the Britishers during their stay in Kolkata. Today it is the most popular market for *Baluchari* sarees, Pepe Jeans, Bankura clay horses, Malda brassware, Shantiniketan leather, Murshidabad silk and many other mind boggling goods.

Swabhami - The Heritage Plaza (Map Grid D3) (Moulan Abul Kalam Azad Sarani; ☉:10.30am-8.30pm; Closed on Monday; ☎: +91-33-23205487/ 23203903)

Swabhami, the first heritage plaza on a natural hillock, is not just a shopping plaza, it also serves as a weekend getaway from the hustle-bustle of city life. It has different sections such as Shilpa-gram, *Karigarer Haat*, Meena Bazaar, Music Courtyard, Rang Manch, Sabhaghar for meetings and parties and Bioscope for screening movies.

TOURIST INFORMATION CENTRES

India Tourism, Kolkata

Embassy, 4 Shakespeare Sarani
☎ : +91-33-22821402/ 2821475/ 25118299
(Airport Counter)
(f) : +91-33-2282 3521
@ : indtour1600@dataone.in
(w): www.incredibleindia.org

West Bengal Tourism Development Corporation Ltd

3/2, BBD Bag (East), Kolkata-700001
☎ : +91-33-22436440, 24488271-73
(f) : +91-33-22485168
@ : kol@westbengaltourism.gov.in
(w): www.westbengaltourism.gov.in

LIST OF MUSEUMS

Birla Industrial & Technological Museum (Map Grid C4)

19A, Gurusaday Road
☎ : +91-33-22812654/ 22877241
(w): www.bitmcal.org
Timings: 10 am-5.30 pm;
Closed: Holi & Diwali
Entry Fee: General/ Students/ BPL: ₹15/ 7/ 4

Indian Museum (Map Grid C3)

27, Jawaharlal Nehru Road
☎ : +91-33-22499902/ 22499979
(w): indianmuseumkolkata.org
Timings: 10am-5pm (March-November), 10am-4.30pm (December-February)
Closed: Monday & National Holidays
Entry Fee: Indian ₹10, Foreigner ₹150

Mother House & Museum (Map Grid C3)

78, AJC Bose Road
☎ : +91-33-22640638
Timings: 8.30am-12pm, 3pm-5.30pm
Closed: Thursday & Sunday

Nehru Children's Museum (Map Grid B4)

94/ 1, Chowringhee Road
☎: +91-33-22231551/ 22233517
(w): www.nehrumuseum.org
Timings: 11am-7pm
Closed: Monday & Tuesday

Rabindra Bharati Museum & Jorasanko Thakurbari

(Map Grid C3)

6/ 4, Dwarkanath Tagore Lane
☎ : +91-33-22695242

Timings: 10.30am-4.30pm

Closed: Monday & National Holidays

Entry Fee: Indian ₹10, Foreigner ₹50
Bangladeshi ₹30

MP Birla Planetarium (Map Grid B3)

96, Jawaharlal Nehru Road
☎: +91-33-22231516/ 22236610

Timings: Weekdays- 12.30pm, 2.30pm & 4.40pm (Hindi), 1.30 pm, 6.30 pm (English) Sunday & Holidays- 10.30am (Hindi)

Entry Fee: Adults ₹30, Children ₹10



MP Birla Planetarium

Victoria Memorial Hall & Museum (Map Grid B3)

1, Queen's Way
☎: +91-33-22231890/ 22231891
(w): www.victoriameorial-museum.org
Timings: 10am-5pm (Museum);
Closed: Monday & National

Holidays 5.30am-7pm (Garden)

Entry Fee: Garden- ₹4; Museum- Indian ₹10, Foreigner ₹150

IMPORTANT NUMBERS

Ambulance	102
Police	100
Fire Brigade	101
Traffic/ Accidents	1073
Kolkata City Railway Station Enquiry-General/ Reservations	1311/ 1322
Airport Enquiry	+91-33-25118787
Emergency Medical Service	+91-33-5540084/ 23700531
ESI Hospital	+91-33-23377211/ 2
National Medical College & Hospital	+91-33-22440122/ 3
Calcutta Medical College & Hospital	+91-33-22414901/ 2
Dr B	

GETTING AROUND

The first underground metro rail service in India - The Kolkata's Metro Rail, serves as the city's lifeline. Extending from Dumdum to Kavisubhash Panchsagar, it covers more than 24 stations en route. The extensive bus network of WBSTC (West Bengal Surface Transport Corporation) and CSTC, considered the cheapest, though not as comfortable, ply regularly on the city streets. Private deluxe buses are available for sightseeing and intercity transit.

Calcutta Tramways Company (CTC) runs electric trams on street tracks. Though withdrawn in some areas it has, over the years, come to symbolise Kolkata.

The yellow ambassador taxis are easily available, they run on meters and do not charge extra for late night hires. Local trains from Howrah and Sealdah station cater to millions of commuters every day. Ferry services from Howrah to Armenian Ghat, Fairlie Place, Chandpal Ghat and Babu Ghat are used by locals for crossing the river on work.

TOURIST ATTRACTIONS

Acharya Jagadish Chandra Bose Indian Botanic Garden (Map Grid A3) (Howrah; ☉: *sunrise to sunset*; ☎: +91-33-26680554/26689970)

Considered the largest and oldest in South-east Asia, it was previously known as 'Company Bagaan' or Company's Garden. Built in 1878, the garden was a brain child of Lieutenant Colonel Robert Kyd. Sprawling across 273 acres, it is home to over 12,000 trees and shrubs which are of about 1,400 species. The prime attraction of the garden is the 200 year old banyan tree, one of the largest in the world.

Dakshineswar Kali Temple (Map Grid C1) (Dakhineswar; ☉: 5am-10.30am, 4.30pm-7.30pm; ☎: +91-33-25645222/25641444)

The Dakshineswar Kali Temple on the eastern riverbank of Hooghly dates back to 1847-1855. The shrine was constructed by Rani Rashmoni, on the site that was once a penance ground for Ramakrishna Paramhansa. Just 3 km from here, one can visit the famous Belur Math, the monastery of Shri Ramakrishna Paramhansa. A boat ride to this temple is not to be missed.



Dakshineswar Kali Temple

Eden Garden (Map Grid B3) (Dr. BC Roy Club House, Behind Akashwani Bhawan; ☉: 9am-8pm)

The beautiful landscaped garden was dedicated and nominated after Mrs. Eden, sister of former Governor General Lord Auckland. Nearby is the Eden Garden Stadium, one of the oldest and biggest cricket stadiums in the world. Famous as Lord's of Asia, the stadium, built in 1864 hosts many national & international matches.

Kolkata Maidan (Map Grid B3) (Chowringhee Road)

A heaven for sport lovers, the picturesque field on west Chowringhee Road serves as a big relief for the busy Kolkataans. Whether a foodie, a football player, a jogger or a cricket fanatic, the 400 hectare green Maidan is every localite's essential destination. From here, one can also get a glimpse of Fort William, Victoria Memorial and the Shaheed Minar.

Howrah Bridge (Map Grid B3) (Shyam Prasad Mukherjee Road; ☉: 5am-2pm, 5pm-10.30pm; Special Pooja on Tuesday and Saturday)

Also known as Rabindra Setu, the Howrah Bridge on Hooghly River serves a regular passage to lakhs of vehicles and pedestrians. The cantilevered eight lane truss bridge was built in 1943 for the purpose to connect Kolkata and Howrah.



Howrah Bridge

Victoria Memorial Hall (Map Grid B3)

One of the eminent and most visited monuments in Kolkata, the Victoria Memorial, dedicated to Queen Victoria, is 184 ft tall and is sprawled over an area of 64 acres. The memorial was later converted to a museum which provides a gallery to British period paintings, sculptures, maps, coins, stamps, textiles etc. The garden outside the building is a perfect place to hang around in the evenings.

Shaheed Minar (Map Grid B3 No.12) (Near Esplanade)

Known as 'Ochterlony Monument', during the British era, the beautiful white pillar was dedicated to Sir David Ochterlony's triumph during the Nepal war in 1814-1816. Later renamed as Shaheed Minar in 1969, it honoured the freedom fighters who sacrificed their lives during the struggle for Independence.

Kalighat Temple (Map Grid B4)

The two century old Kalighat is one of the 51 shaktipeeths of

India. Legend has it that Goddess Sati's right toes fell here during the Mahatandava of Lord Shiva. The temple finds a mention in *Mansar Bhasan* which was composed sometime in the 15th century. Near the temple is Nirmal Hriday – the home for sick, dying and destitute, run by the Missionaries of Charity, once headed by Mother Teresa.



Kalighat Temple

Marble Palace (Map Grid C3) (46, Mukhtaram Babu Street; ☉: 10am-4pm; Closed on Monday & Thursday; Photography not allowed; Permission from West Bengal Tourist Office, BBD Bagh or Indiatourism; ☎: +91-33-22825813)

The neo classical 19th century marble mansion, takes one back to the traditional Bengali yesteryears. Structured with tall Corinthian columns, balconies and inclined roofs, its pavilions show similarities with Chinese architecture. The 3 storied edifice houses a *thakur dalan* (family temple) near the patio, a restaurant, a rock garden, a lake and a small zoo.

Rabindra Sadan (Map Grid B4) (Junction of AJC Bose Road & Cathedral Road)

Whether dance, drama, art, poetry or literature, everything finds a platform in Rabindra Sadan. Named after the noble laureate Rabindra Nath Tagore, the complex was established in the year 1967. Inside the complex is Rabindra Sadan theatre – Nandan, Bangla Academy and Gaganendra Prodrosorshonshala. Apart from plays, dramas and stage shows, many popular film festivals are also organised here.

Rabindra Sarovar (Map Grid C4) (Salt Lake City)

Once called as Dhakuria Lake, the Rabindra Sarovar is an artificial water body which serves as a perfect picnic spot. Apart from the migratory birds, one can also visit the Rabindra Sarovar Football Stadium, Mukha Mancha – open air theatre and the Japanese Buddha Temple.

Nakhoda Masjid (Map Grid C3 No.8) (Jacquaria Street; ☉: 6am-8pm)

One of the renowned mosques of Kolkata, Nakhoda Masjid was built in 1926 by Abdar Rahim Osman. Its architecture resembles the monuments of Fatehpur Sikri. The colossal prayer hall can provide room for more than 10,000 *namazis* at one time.



Nakhoda Masjid

St. Paul's Cathedral (Map Grid C3 No.7) (1A, Cathedral Road; ☉Prayer: 7.30am, 8.30am, 10.30am; ☎: +91-33-22230127)

This Episcopal cathedral church was sponsored by Bishop Wilson and built in 1880 by Sir Edward Burne-Jones. Following an Anglican style of worship, the church is well known for its stained glass panels, carved benches and murals on wall. The meditation hall in the churchyard is a gift of peace from the dignitaries of Shantiniketan.



St. Paul's Cathedral

Vidyasagar Setu (Map Grid B3)

Popular as second Hoogly Bridge, the suspension bridge was constructed in 1992. Constructed over 22 years on an estimated cost of 3.88 billion rupees, the bridge provides passage to more than 85,000 vehicles every day.

Jorasanko Thakurbari (Map Grid C3)

The brick-red mansion of Jorasanko 'Thakurbari', was once the residence of Nobel laureate Rabindranath Tagore. It was turned into a museum by Pt. Jawahar Lal Nehru in 1961. Special celebrations take place on the poet's birthday on the 25th day of Bengali month of *Baisakh*.

Writers' Building (Map Grid B3 No.13) (BBD Bagh; ☉: 9am-6pm; Photography not allowed)

The huge red building on BBD Bagh also known as 'Mahakaran' or the Secretariat, houses the office of the Chief Minister and more than 6,000 administrative officers.

Zoological Garden (Map Grid B4) (Alipore; Entry fee: ₹10; Video Domestic/ Commercial: ₹250/500; ☉: 9am-5pm; Closed on Thursday & National Holidays; ☎: +91-33-24791150, 24399391)

This zoo was a brainchild of L Schwendier, a member of the Asiatic Society of Bengal. Built in 1875, the zoological garden has been a source of education, amusement and pleasure for the people of Kolkata and tourists who visit from all over the world.

FEW WORDS FROM INDIAN LEXICON

English to Hindi/ Bengali

Address	: Pata/ Thikaana
Answer	: Jawab/ Uttor
Arrival	: Pahunchna / Aagomon
Baggage	: Saaman/ Jeenish Potro
Directions	: Dishayen/ Dik
Festival	: Tyohar / Porbon
Food	: Khana/ Khabaar
Friend	: Dost / Bondhu
Fruit	: Phal/ Phal
Gift	: Uphar/ Upohaar
Hungry	: Bhukha/ Khudhito
Hurry up	: Jaldi Karo/ Taratari Koro
Water	: Pani/ Jal
Price	: Mulya/ Daam
Purchase	: Kharidna/ Kena
Question	: Sawal/ Proshno
Safe	: Surakshit/ Shurokhhito
Shop	: Dukaan/ Dokaan
Thank You	: Dhanyavadv/ Dhonnobaad
Toilet	: Jan Suvaidha/ Sulabh bathroom
Vegetable	: Sabzi/ Torkaar
Your	: Tumhara/ Tomaar

CONVERSATIONAL PHRASES

At the Airport	: Airport Er Kaache
Where is the exit?	: Baahire Jaoaar Raasta Kothaye?
How far is the hotel?	: Hotel Koto Doore?
What is the rent?	: Bhara Koto?
Please call Taxi	: Doya Kore Taxi Deke Din
Please stop here	: Ekhaane Thaamun
Place worth visiting	: Dekhaar Moto Jayega
Want city guide map	: Shohorer Maanchitro Chaayi
Show me the way	: Amaake Raasta Dekhaan
Please do booking	: Doya Kore Booking Kore Din
Which is the main shopping centre?	: Prodhan Bajaan Kanta
I want to send an e-mail	: Aami Email Pathaate Chaayi
It is hot/ cold today	: Aajke Khoob Gorom / Thaanda

ACCOMMODATION

Wide range of hotels in all categories are available. Contact nearest tourist office or www.incredibleindia.org

FAIRS & FESTIVALS

Saraswati Puja (January-February)

On the holy day of Basant Panchami, Devi Saraswati, the Goddess of knowledge and art is worshipped with bel (Aegle marmelos) leaves, fresh white/ yellow flowers, sandal wood paste, phaag and abhro (herbal colours).

Dol Purnima (March)

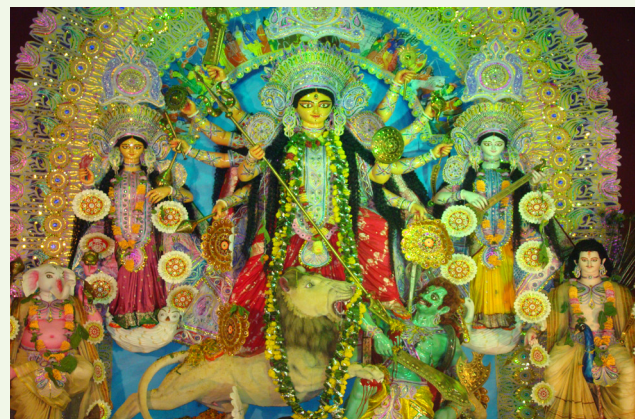
Just like Holi in rest of the country, the spring festival of colours known as Dol Purnima in West Bengal is celebrated with great pomp and show.

Poila Baisakh (April)

Also known as Naba Barsha, Poila Baisakh is the celebration of the Bengali New Year.

Durga Puja (September-October)

The celebration of Goddess Durga's victory on buffalo demon king *Mahisasura*, is one of the biggest festivals in West Bengal. The city of Kolkata lightens up like a diamond during night as people crowd up the roads and gather in pandals.



Durga Puja

Kali Puja (October-November)

The festival of Goddess Kali is celebrated during Diwali. Special puja is held in Kalighat and Dakshineswar Temple where the ritual of animal sacrifice takes place. The occasion is marked with decoration of lamps, candles and a lot of crackers.

Bhai Phota (October – November)

Bhai Phota is an occasion where a sister puts sandal mark or *tika* on her brother's forehead and prays for his long life. The brother in return promises to protect her throughout his life.

Christmas (December)

Christmas is celebrated in Kolkata with the same spirit as other festivals. The day begins with carols and prayers. Park Street,

the main hub of celebrations is lighted with twinkling bulbs and draped with decorative papers.

Muharram

The day of martyrdom of Prophet Mohammed's grandson Imam Hussain is observed all over India with a mournful modality. In Kolkata huge rallies can be seen from Rajabazar, Kidderpore and Sealdah which meet at Beliaghata.

SHOPPER'S PARADISE

Park Street (Map Grid C3) (☉:10am-10 pm; Open on all days)

Renamed as Mother Teresa Sarani, Park Street is one of the busiest and popular shopping arcades of Kolkata. One of the posh localities of Kolkata, it boasts of its night life and noted restaurants like Blue Fox, Mocambo, Peter Cat, Tantra, Park Hotel etc. Just in its neighbourhood is Chowringhee, another major shopping centre.



Park Street

Bowbazar (Map Grid C3) (Bipin Behari Ganguly Street; ☉:10am-8.30pm; Closed on Sunday)

One of the oldest markets of Kolkata, Bowbazar is a hub of branded jewellery showrooms. The limitless designs and variety in gold, silver and stones make it one stop shop for weddings.

Burrabazar Market (Map Grid C3) (☉:11am-8.30pm; Closed on Sunday)

The Marwari dominated market Burrabazar, locally called *Bara Bazar*, graduated from a textile to a wholesale market. Today the 19th century market boasts of its garments, sarees, jewellery, restaurants, florists and grocery shops.

College Street (Map Grid C3)

'Boi Para' or a book lane, as it is known, College Street is the ultimate destination for book lovers, students and those who have a literary bent of mind. The Indian Coffee house in its neighbourhood is a landmark known for 'Adda' or gossip. One can have a cup of coffee or tea in the presence of Kolkata's renowned celebrities, many of whom are regular visitors.

Gariahat Market (Map Grid C4) (Gariahat; ☉:10.30 am-8.30 pm; Closed on Sunday)

The bustling market of Gariahat in South Kolkata is a shopaholic's first choice. It has wide varieties of branded and non-branded sections which include everything from night wear, tees, jeans, duppattas, tops, sarees, shirts, leather and jute bags, clutch purses, wallets, food bags, shoes and many more.

New Market (Map Grid C3) (Lindsay Street, off Chowringhee Road; ☉:10 am-8 pm, till 2.30 pm on Saturday; Closed on Sunday)

The gothic style market was set up for the Britishers during their stay in Kolkata. Today it is the most popular market for *Baluchari* sarees, Pepe Jeans, Bankura clay horses, Malda brass-ware, Shantiniketan leather, Murshidabad silk and many other mind boggling goods.

Swabhami - The Heritage Plaza (Map Grid D3) (Moulanā Abul Kalam Azad Sarani; ☉:10.30am-8.30pm; Closed on Monday; ☎: +91-33-23205487/23203903)

Swabhami, the first heritage plaza on a natural hillock, is not just a shopping plaza, it also serves as a weekend getaway from the hustle-bustle of city life. It has different sections such as Shilpa-gram, *Karigarer Haat*, Meena Bazaar, Music Courtyard, Rang Manch, Sabhaghar for meetings and parties and Bioscope for screening movies.

TOURIST INFORMATION CENTRES

India Tourism, Kolkata

Embassy, 4 Shakespeare Sarani
 ☎ : +91-33-22821402/2821475/25118299 (Airport Counter)
 (f) : +91-33-2282 3521
 @ : indtour1600@dataone.in
 (w): www.incredibleindia.org

West Bengal Tourism Development Corporation Ltd

3/2, BBD Bag (East), Kolkata-700001
 ☎ : +91-33-22436440, 24488271-73
 (f) : +91-33-22485168
 @ : kol@westbengaltourism.gov.in
 (w): www.westbengaltourism.gov.in

LIST OF MUSEUMS

Birla Industrial & Technological Museum (Map Grid C4)

19A, Gurusaday Road
 ☎ : +91-33-22812654/22877241
 (w): www.bitmcal.org
Timings: 10 am-5.30 pm;
Closed: Holi & Diwali

Entry Fee: General/ Students/ BPL: ₹15/ 7/ 4

Indian Museum (Map Grid C3)

27, Jawaharlal Nehru Road
 ☎: +91-33-22499902/ 22499979
 (w): indianmuseumkolkata.org
Timings: 10am-5pm (March-November), 10am-4.30pm (December-February)
Closed: Monday & National Holidays
Entry Fee: Indian ₹10, Foreigner ₹150

Mother House & Museum (Map Grid C3)

78, AJC Bose Road
 ☎: +91-33-22640638
Timings: 8.30am-12pm, 3pm-5.30pm
Closed: Thursday & Sunday

Nehru Children's Museum (Map Grid B4)

94/ 1, Chowringhee Road
 ☎: +91-33-22231551/ 22233517
 (w): www.nehrumuseum.org

Timings: 11am-7pm

Closed: Monday & Tuesday

Rabindra Bharati Museum & Jorasanko Thakurbari

(Map Grid C3)

6/ 4, Dwarkanath Tagore Lane

☎: +91-33-22695242

Timings: 10.30am-4.30pm

Closed: Monday & National Holidays

Entry Fee: Indian ₹10, Foreigner ₹50 Bangladeshi ₹30

MP Birla Planetarium (Map Grid B3)

96, Jawaharlal Nehru Road

☎: +91-33-22231516/ 22236610

Timings: Weekdays- 12.30pm, 2.30pm & 4.40pm

(Hindi), 1.30 pm, 6.30 pm (English) Sunday & Holidays- 10.30am (Hindi)

Entry Fee: Adults ₹30, Children ₹10



MP Birla Planetarium

Victoria Memorial Hall & Museum (Map Grid B3)

1, Queen's Way

☎: +91-33-22231890/ 22231891

(w): www.victoriamemorial-cal.org

Timings: 10am-5pm (Museum);

Closed: Monday & National

Holidays 5.30am-7pm (Garden)

Entry Fee: Garden- ₹4; Museum- Indian ₹10, Foreigner ₹150

IMPORTANT NUMBERS

Ambulance	102
Police	100
Fire Brigade	101
Traffic/ Accidents	1073
Kolkata City Railway Station	
Enquiry-General/ Reservations	1311/ 1322
Airport Enquiry	+91-33-25118787
Emergency Medical Service	+91-33-5540084/23700531
ESI Hospital	+91-33-23377211/ 2
National Medical College & Hospital	+91-33-22440122/ 3
Calcutta Medical College & Hospital	+91-33-22414901/ 2
Dr B C Roy Memorial Hospital For Children	+91-33-23528101
Bengal Taxi Association in Kolkata Airport	+91-33-25112101

Note: Due to space constraint, all places of interest could not be included here. For more up-to-date information, contact nearest India Tourism office. Or visit www.incredibleindia.org